

CASE STUDY

Comtec Enterprises Relocates Newham Primary Care Trust

Newham Primary Care Trust serves the community of the London Borough of Newham. It employs around 1,050 staff based across 23 sites, and encompasses all 65 GP practices, 69 pharmacist, 55 optician and 80 dentist sites in the borough. The Annual Budget is £439,556,000. The latest Office for National Statistics estimate shows Newham's population to be 247,700.

As well as providing a range of primary & community health services, The Trust commissions most of the primary, community and secondary health care in the borough. Services are provided for children and young people, older people, people with learning disabilities, and those needing family planning and sexual health services.

The Challenges

Newham Primary Care Trust wanted to centralise their Plaistow, Stratford, East Ham, Barking, Newham offices and practices to the Excel Centre in Docklands. Comtec were chosen as the best of breed to take on this job after winning the tender. This involved moving Newham's data centre and over 600 workstations and 100 printers.

In addition, Comtec won another tender to supply, install and commission a 60kw UPS infrastructure system.

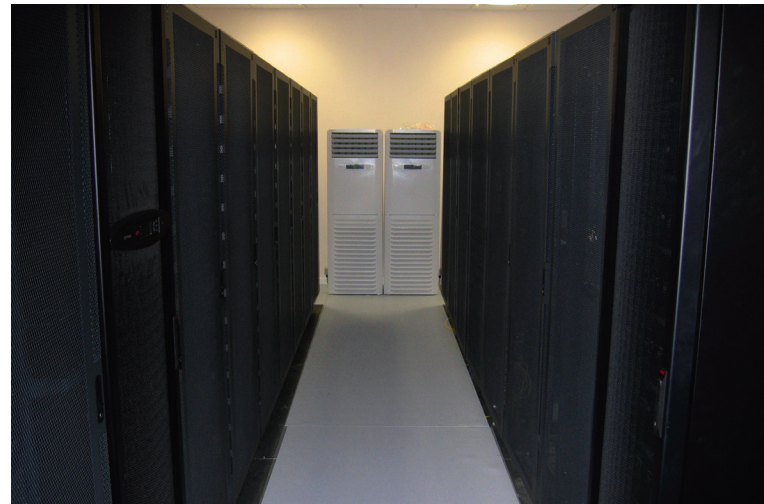
Critical to the relocation was business continuity. Significant levels of downtime would seriously impact upon Newham Primary Care Trust's operations, this also being detrimental to doctors and patients alike.

The deconstruction of existing IT infrastructure, the physical shipping and the installation and testing of the IT equipment on their new network presented many risks to ongoing operations.

The Solution

Newham were especially impressed by Comtec's tender and the flexibility they were offering. This entailed 24/7 support and an unlimited timescale for the use of Comtec's engineering team. Comtec were also able to move some very large and heavy items from Newham's comms room that had been turned down by other relocation companies.

After winning the tender, Comtec appointed a dedicated project manager for the whole job. The project manager was responsible for the team of engineers and also reporting to Newham by working closely with Newham's IT division, Comtec devised a strategic plan for each of the relocations.



The Results

Within one week Comtec successfully relocated Newham PCT's IT infrastructure consisting of over 50 servers, 600 workstations and 100 printers. The servers were all re-racked, re-cabled and powered on. The workstations were placed on desks according to a seating plan devised by Newham PCT and the Comtec project manager. All workstations and monitors were tagged according to this plan by Comtec, they were then re-cabled, powered on and network tested using a test login supplied by Newham PCT's IT team.

"I would like to thank Comtec for its professional approach and attitude in moving well over 600 workstations and 50 servers to our new trust headquarters at warehouse K, Excel. Newham PCT will definitely be recommending and utilising Comtec's services in the foreseeable future."

Bob Khan, Relocation Project Manager at Newham



About Comtec

Comtec Relocations is a leading IT relocation service provider, specialising in relocation of IT equipment for small offices through to large data centres. We offer a comprehensive set of services to support customers move their mission critical IT infrastructure providing piece of mind and minimum downtime. Our IT relocation services can be tailored to your specific needs whether it is a fully project managed data centre relocation or a simple office move.

Minimising disruption and ensuring business continuity is critical during the relocation of your IT facilities. We understand IT is a precious asset and must be moved quickly, yet with precise care. Choosing Comtec for your project you can be sure that your IT relocation will be in the safe hands of qualified professionals. We provide IT relocations for organisations in both the public and private sector.



Visit www.comtec.com/relocations
or call **0845 899 1400**
for further information.